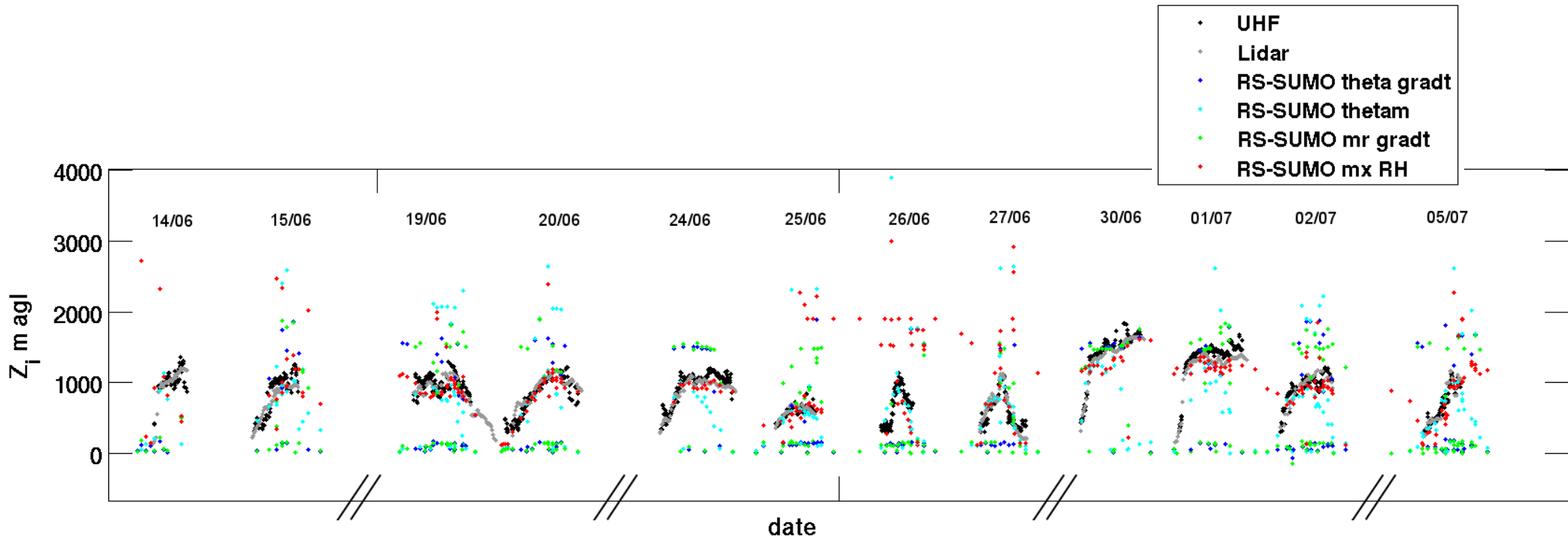
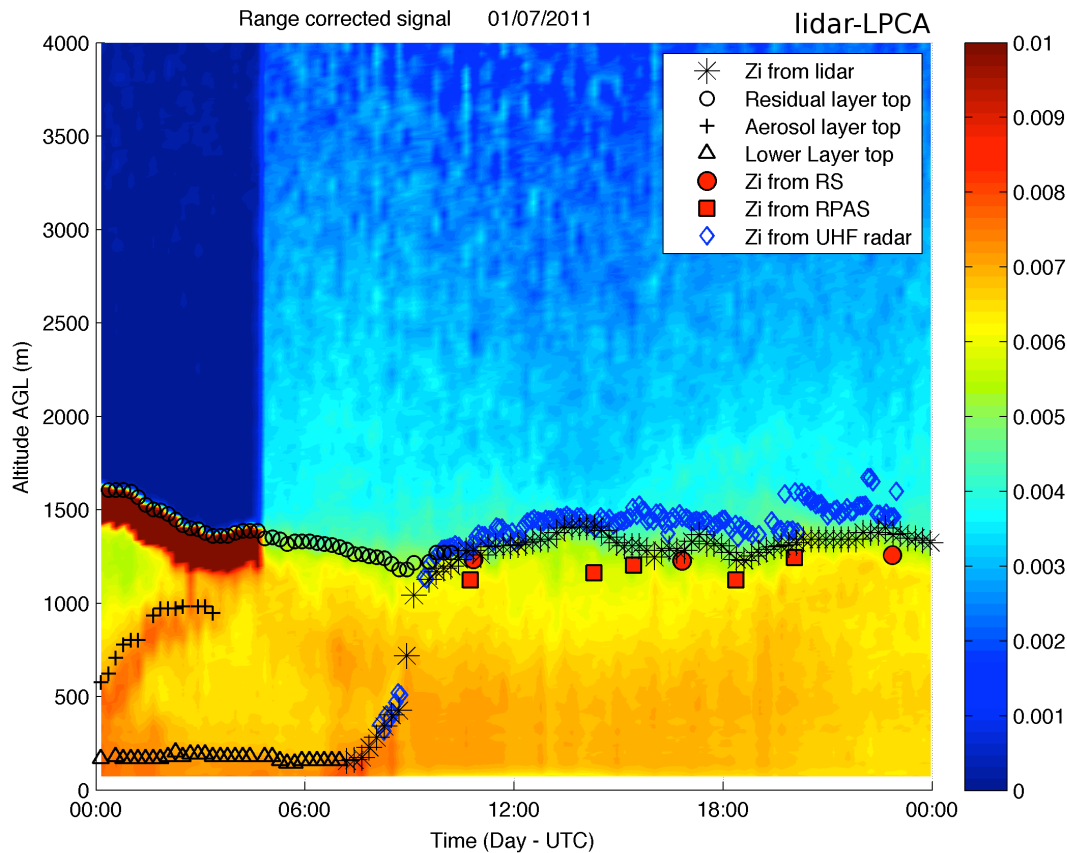


Series of different estimates available on database *with various criteria for soundings*

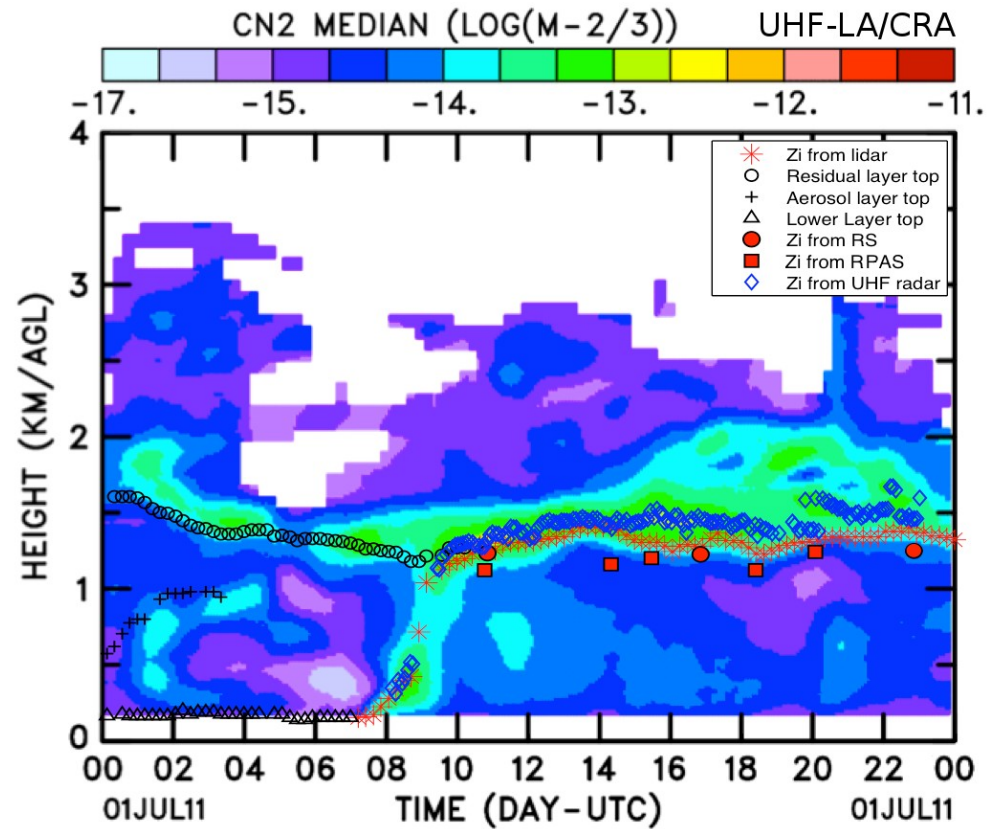
P. Augustin, F. Couvreur, M. Lothon



LPCA Aerosol Lidar



LA UHF wind profiler



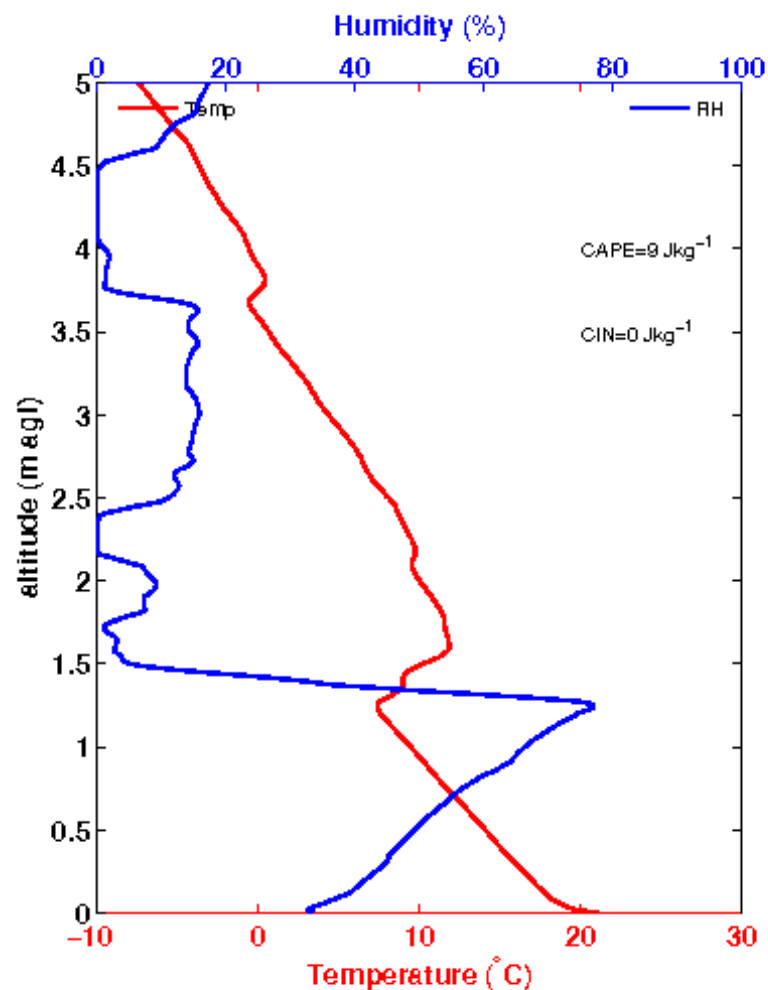
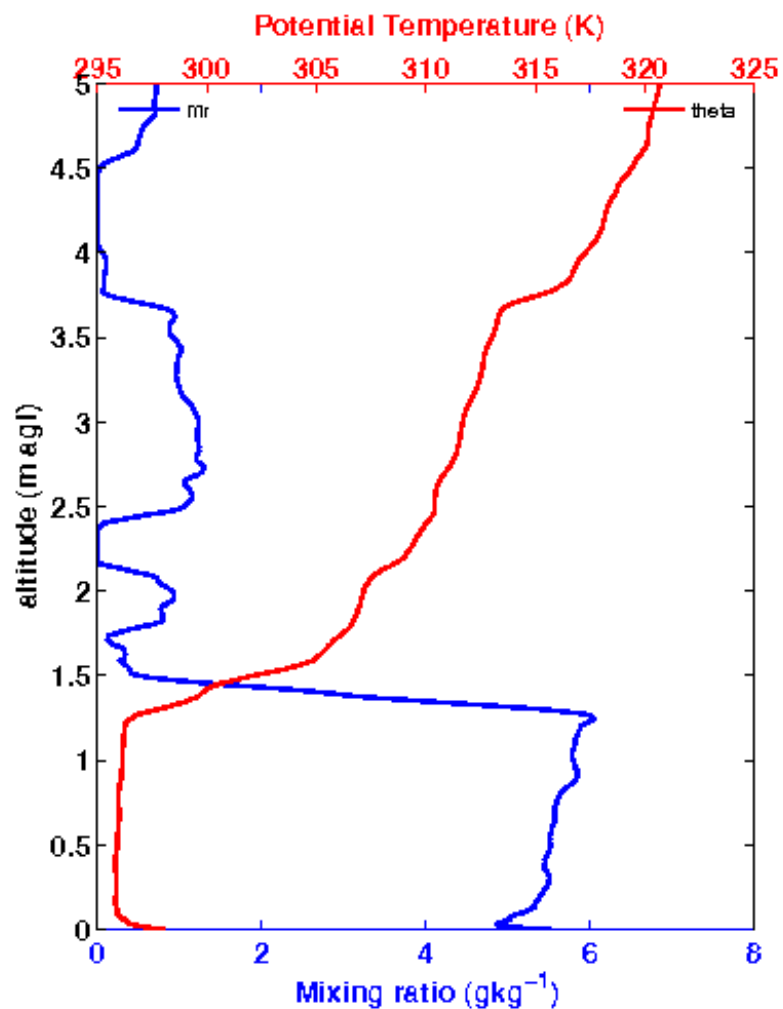
Criteria for radiosoundings and SUMO soundings

Crit 1 : potential temperature gradient (Z of maximum second derivative)

Crit 2 : mixed potential temperature (Z of $\theta > \theta_{\text{surf}} + 0.25 \text{ K}$)

Crit 3 : water vapour mixing ratio gradient (Z of minimum second derivative)

Crit 4 : max relative humidity (Z of maximum relative humidity)



Series of different estimates

With best choice for soundings

