

Land surface spinup for episodic modeling

Wayne M. Angevine

CIRES, University of Colorado, and NOAA ESRL

Thanks to:

Marie Lothon, Fabienne Louhou, David Pino, Fleur Couvreux (BLLAST experiment and intercomparison setup)

Eric Bazile (SAFRAN precipitation analysis)

International Soil Moisture Network (Wouter Dorigo, TU Wien) and SMOSMANIA (Jean-Christoph Calvet, Meteo-France)

Soil moisture spinup

Experiments with self-spinup

BLLAST case in France, June 2011

Goal: Correct conditions at midday to investigate of afternoon transition

Why self-spinup? Highly-resolved analyses are not available or reliable

What?

WRF 9/3 km grids initialized with ERA-Interim every day at 0000 UTC

Soil moisture and temperature initialized from ERA-Interim at 0000 UTC 1

June, then self-cycled for 30 days (cycle 1)

Cycle 2 initialized 0000 UTC 1 June with WRF soil moisture and temperature from cycle 1 at 0000 UTC 1 July

Three configurations of two LSMs:

1. Noah with default four soil layers (thicknesses 0.1, 0.3, 0.6, 1 m)
2. PXLISM with default two layers (thicknesses 0.01, 0.99 m)
3. Noah with thinner top layer (thicknesses 0.01, 0.3, 0.6, 1 m)

What is spinup supposed to do?

1. Increase spatial variation of soil variables (downscaling)
(DEMONSTRATED)
2. Remove biases overall and/or in specific locations, land use or soil types
(PARTIALLY DEMONSTRATED)
3. Reduce scaling differences due to LSM formulation
4. Compensate for errors in parameters or formulation (LSM, PBL, etc.)

Soil moisture during spinup demonstrating downscaling

ERA moisture dries out after ~ 8 June, std.dev. has no trend

WRF moisture decreases except in early June when it rains

WRF std.dev. increases especially when it rains

PX moisture decreases more slowly than Noah (thicker layer)

PX std.dev. is greatest in whole domain, but least in 10x10 box

Thinner 1st layer in Noah makes it more responsive but changes longer-timescale behavior little

Black = ERA

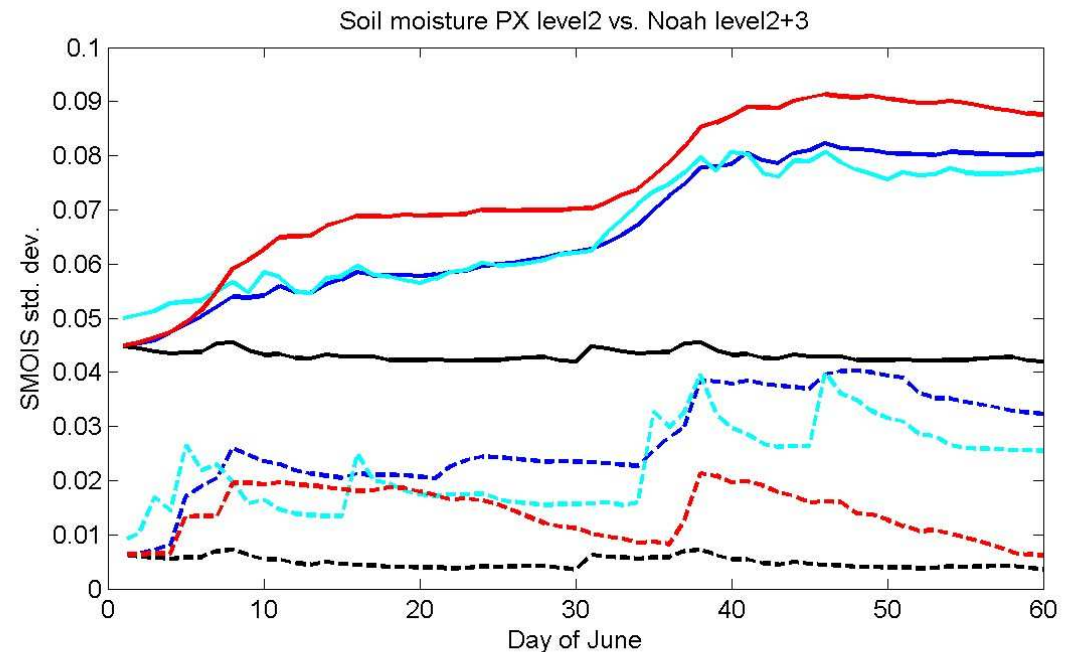
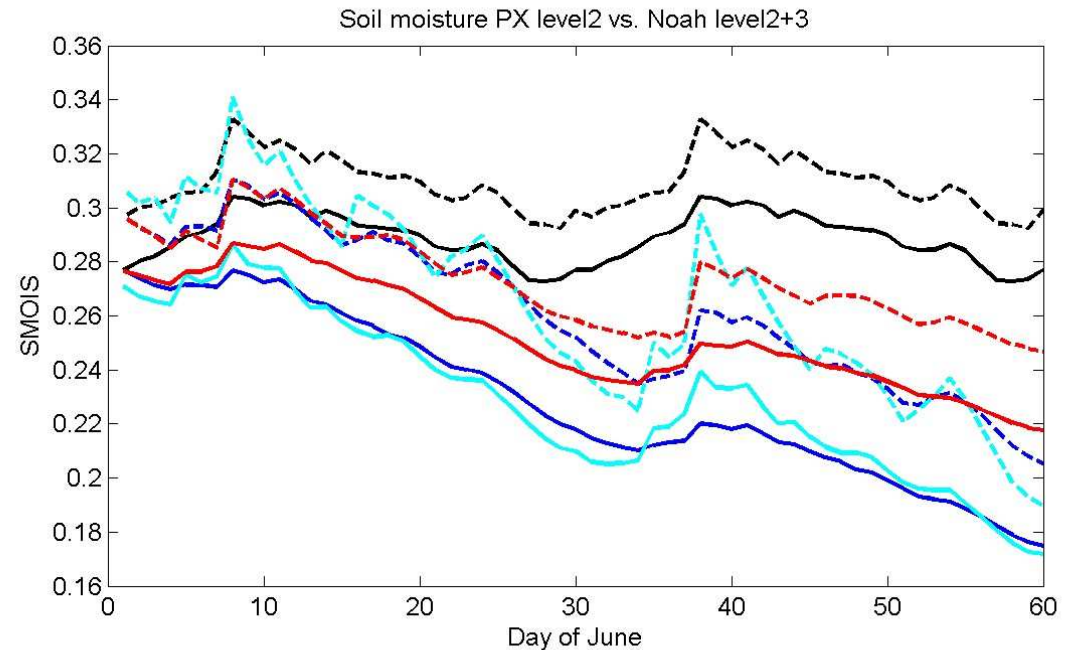
Blue = Noah, defaults

Cyan = Noah, ZS(1)=.005

Red = PXLSM

Solid = whole domain average

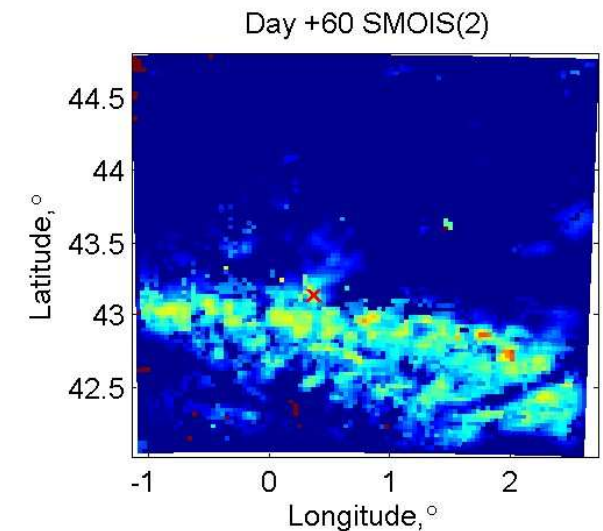
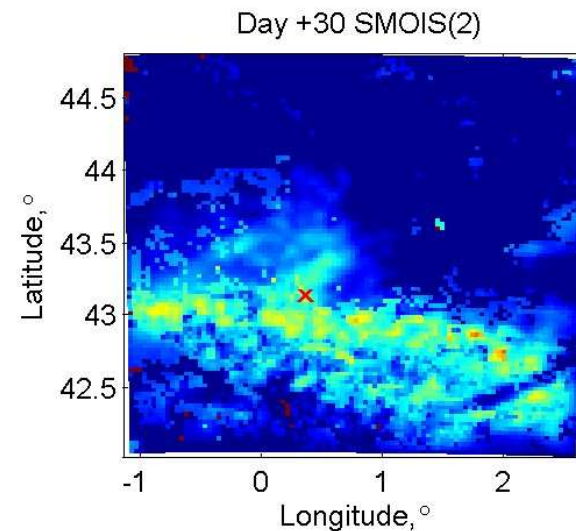
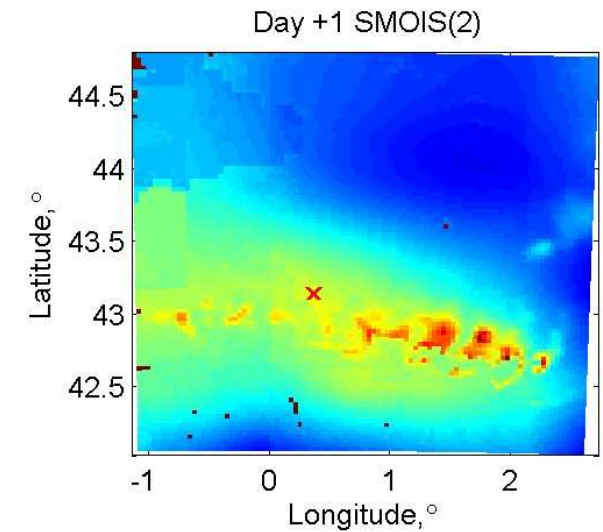
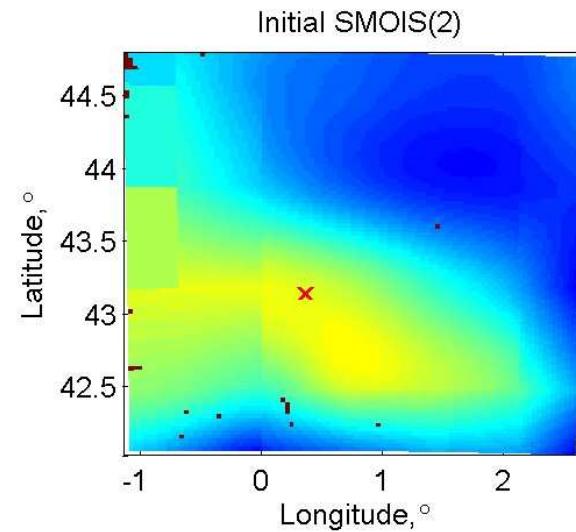
Dashed = 10x10 avg northeast of site



Soil moisture during spinup demonstrating downscaling

Detail emerges quickly, seems fully established by 30 days, but std.dev. (previous figure) continues to increase when it rains

Lannemezan (red X) is within the mountain moist zone in ERA, moisture there gradually decreases with spinup and gradients in its vicinity increase

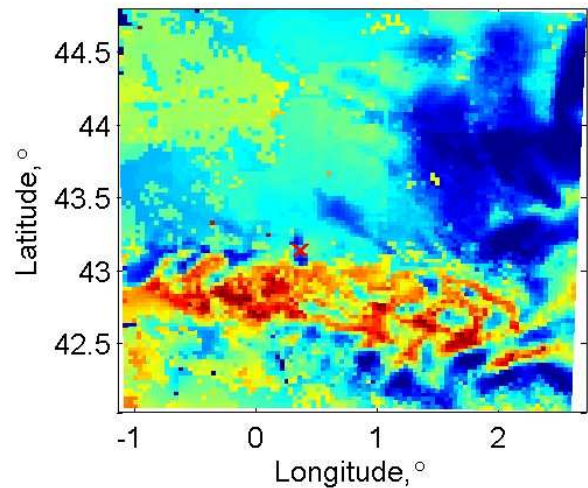


Heat flux during spinup

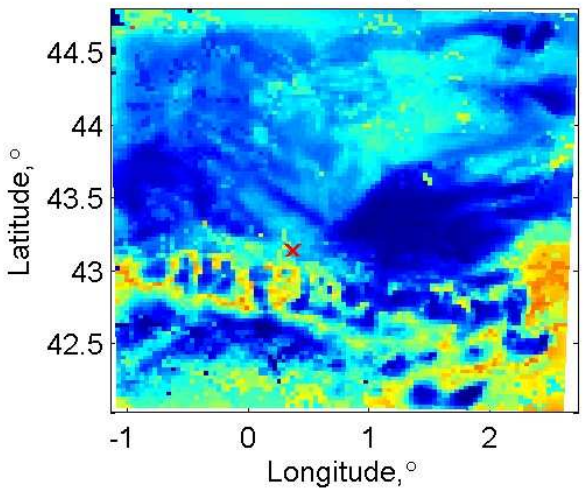
Heat flux from Noah has detail immediately despite smooth soil moisture because it uses soil and vegetation types

Day 30 and day 60 have similar spatial pattern but magnitude has increased

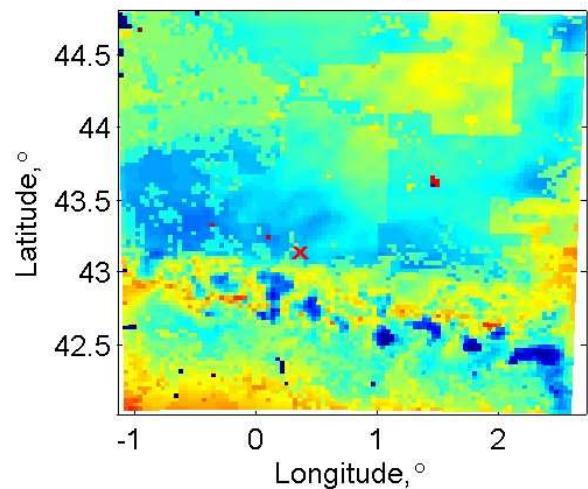
HFX 14Z Day 1



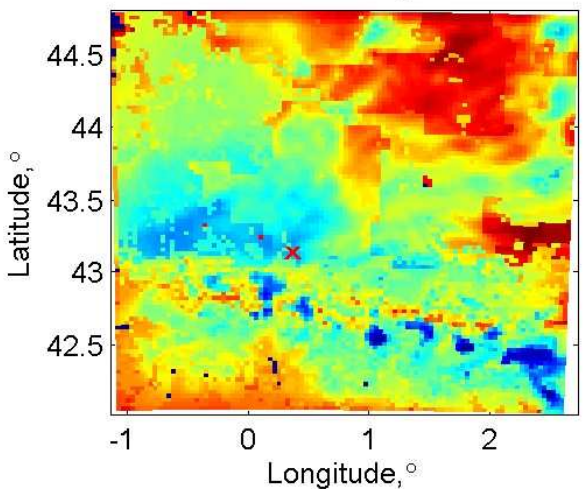
HFX 14Z Day 2



HFX 14Z Day 30



HFX 14Z Day 60



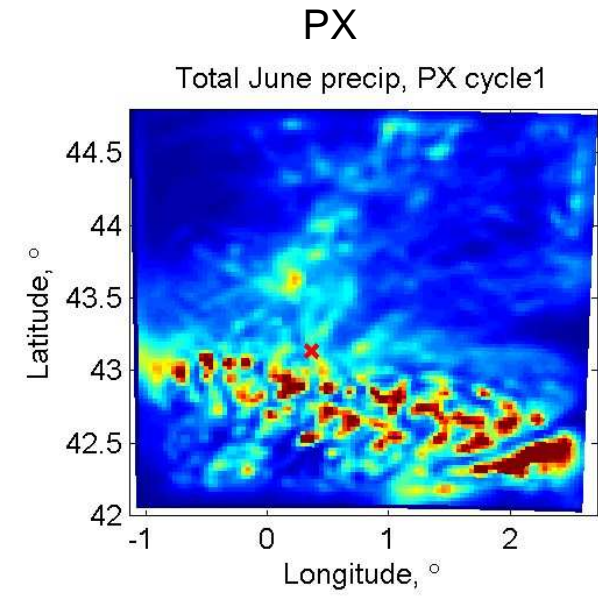
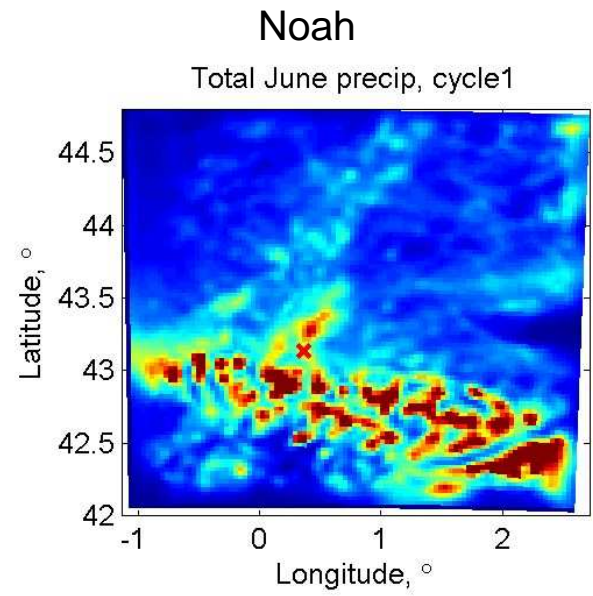
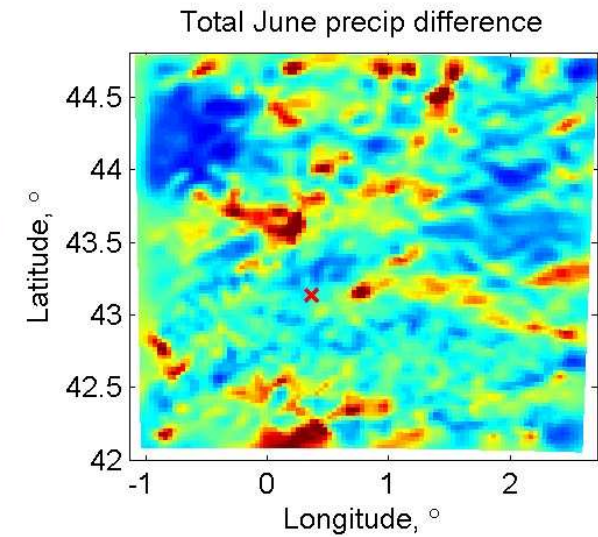
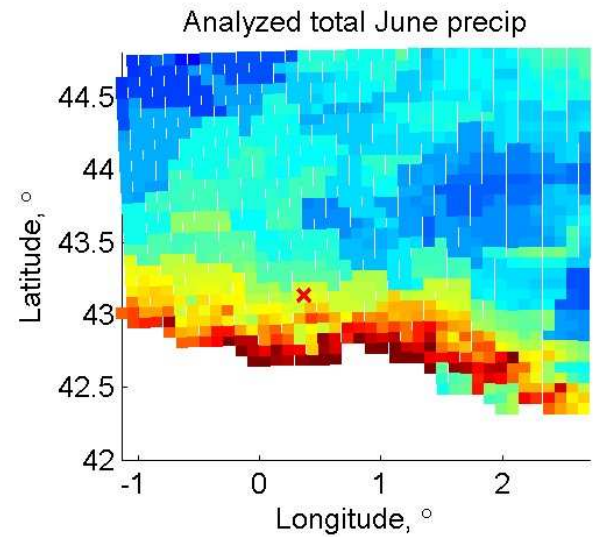
Precipitation in two LSMs during spinup

Precip from the model itself is the only source of moisture during the spinup

Neither WRF run agrees exactly with analysis (SAFRAN, thanks to Eric Bazile)

WRF has too little rain overall and especially in West

Differences between LSMs are up to 100% in any grid cell, but total only about 13% (Noah higher)



Precipitation in two(+) LSMs during spinup

Precip from the model itself is the only source of moisture during the spinup

Differences between LSMs total only about 13% (Noah higher)

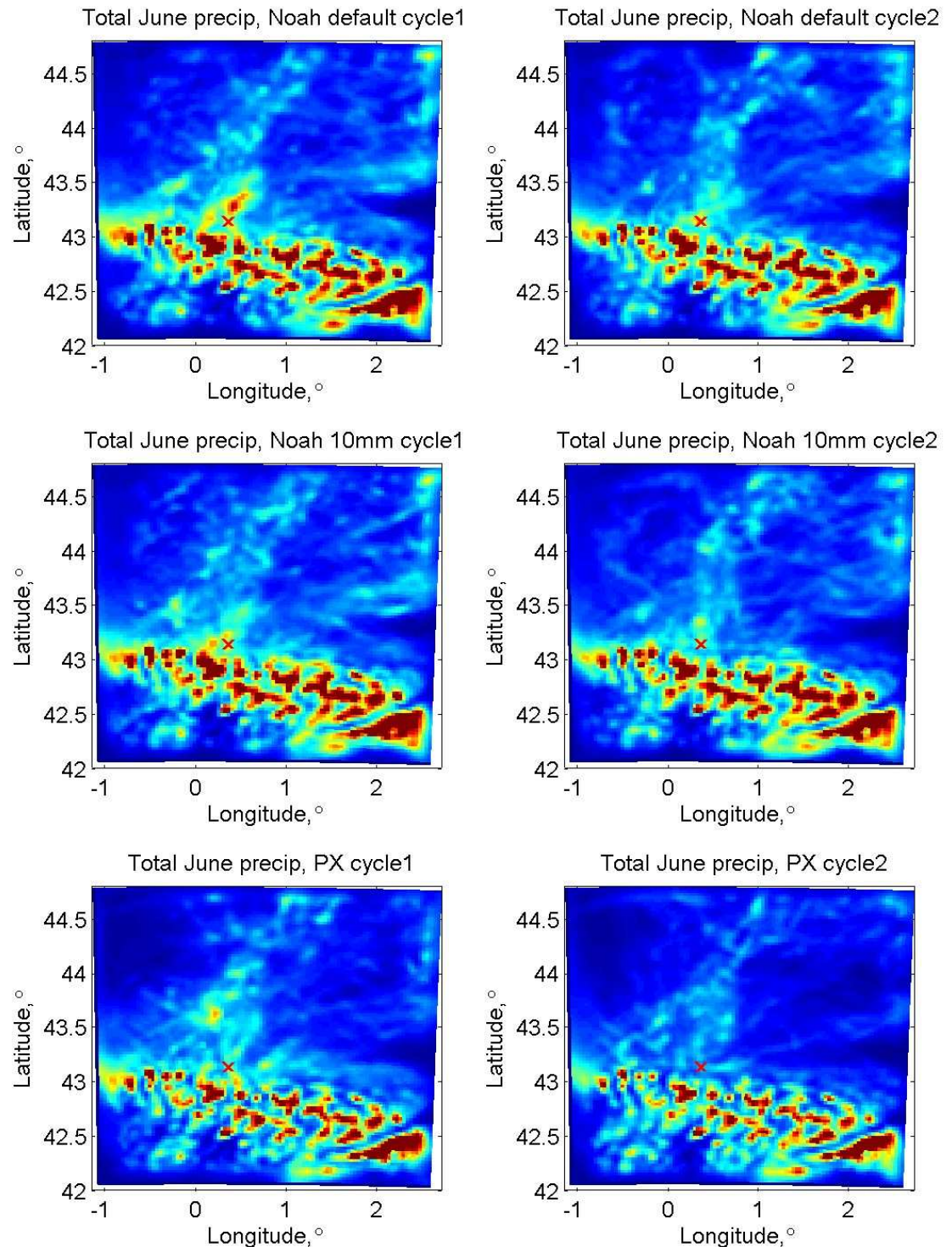
Noah produces 2-3% less precip in cycle2 than in cycle 1

PX produces 11% less precip in cycle2 than in cycle1

Most precip is due to convergence into the domain, not surface fluxes

Lannemezan (red X) is in a region of strong gradients

(Note that color scale is allowed to saturate over mountains)



Soil moisture during spinup compared to data (SMOSMANIA)

Eight sites in France within domain 2 (much site-to-site variation, not shown)

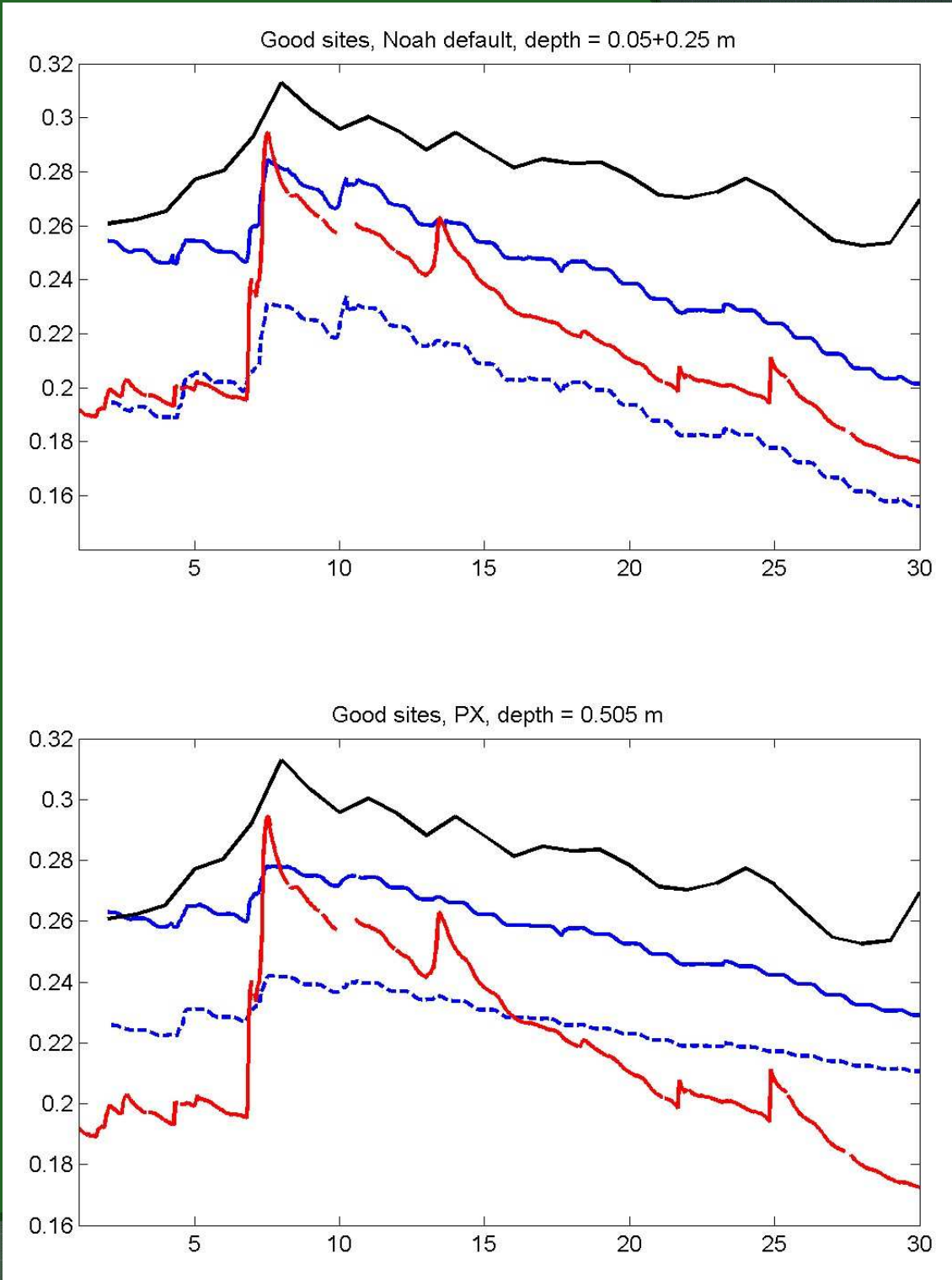
ERA too moist

Noah drying similar to obs
Noah Cycle 1 and 2 straddle obs

PX drying too slow (thicker layer, not strictly comparable since obs only go to 0.3 m depth)

From this, we would expect best performance from either Noah or PX cycle 2

- Black = ERA
- Blue = WRF
- Red = SMOSMANIA
- Solid = cycle 1
- Dashed = cycle 2



Sounding comparison

Seven ~1700 UTC soundings
(24,25,26,27,30 June, 1,2 July)

Near end of each cycle

Direct initialization from ERA (+) is biased
cool and moist

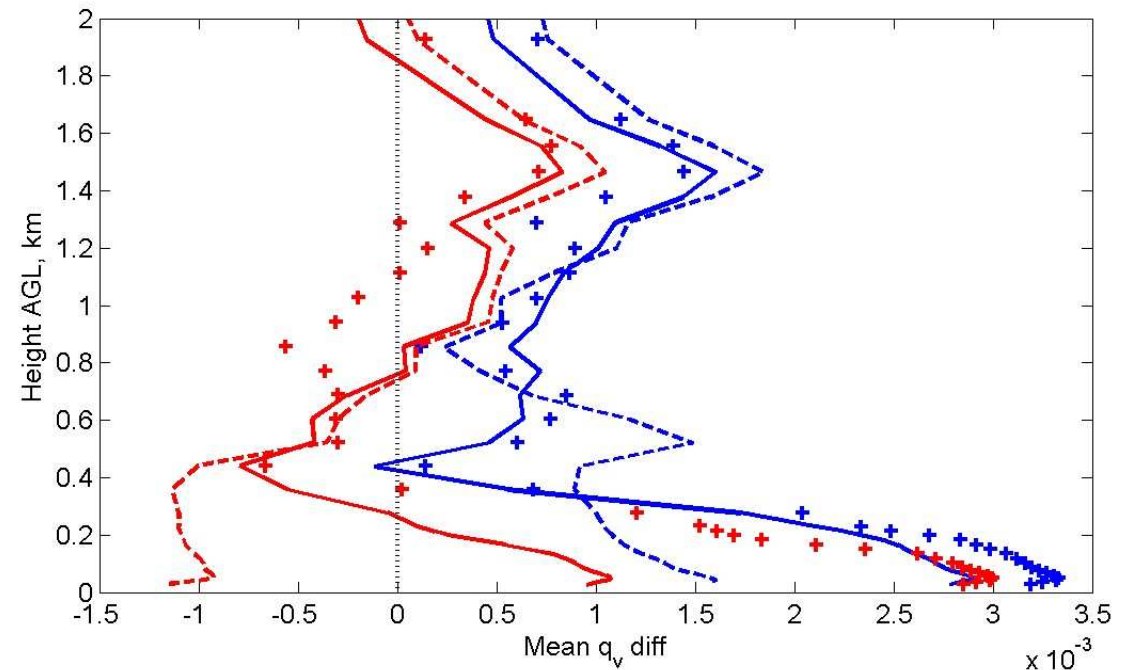
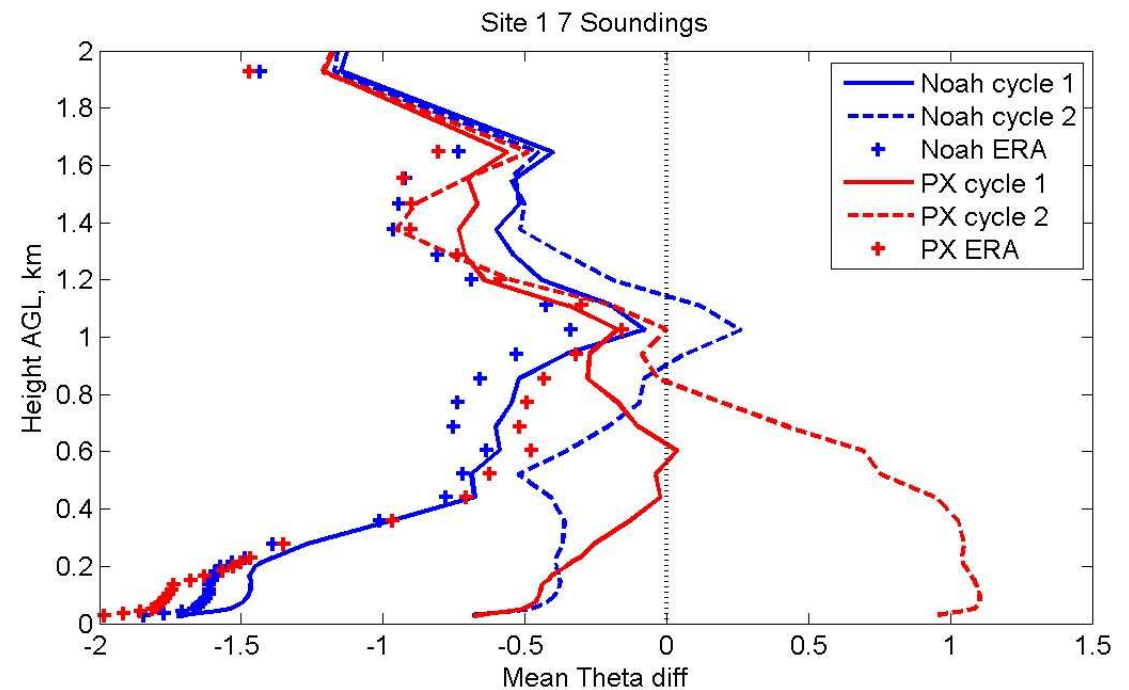
Errors are significantly reduced by one
cycle of PXLMS or two cycles of Noah

PX overshoots with two cycles

Individual soundings show best
performance from Noah cycle2 or PX
cycle1, neither is obviously better

Biases above BL are also cool and moist,
little influenced by spinup

Noah 10mm (not shown) is a little better
than Noah 10cm



Frequent soundings

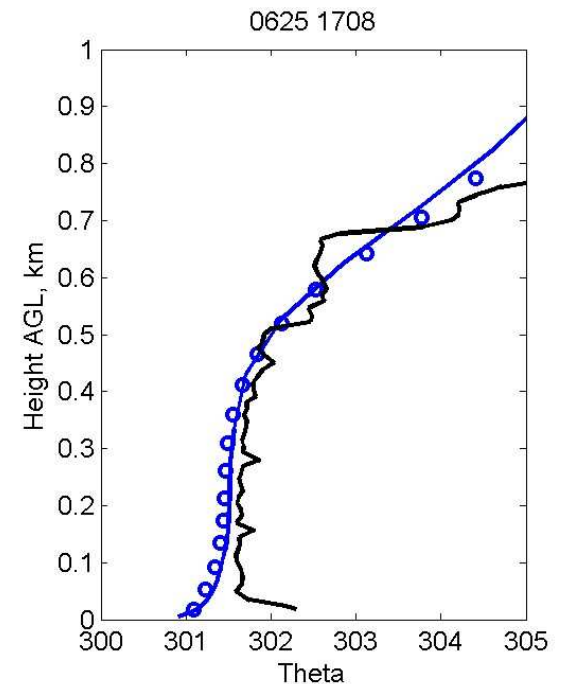
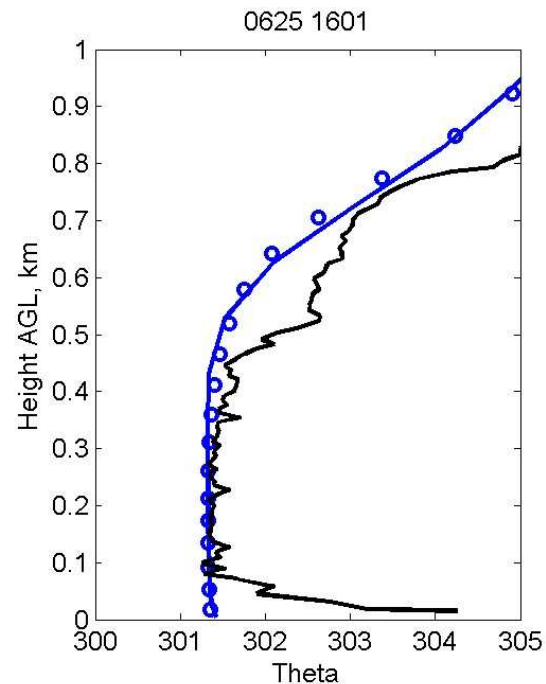
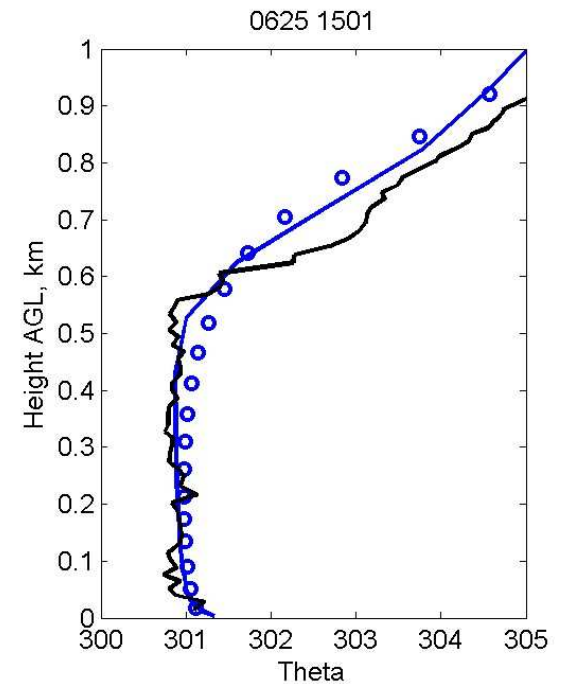
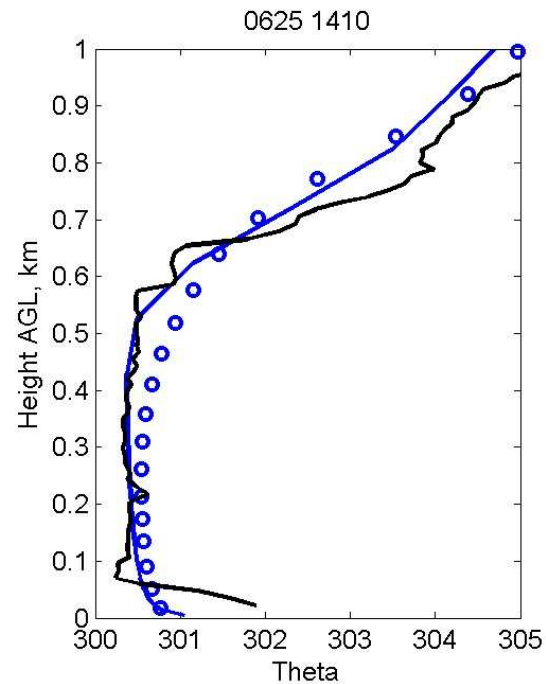
25 June is the most canonical afternoon, but note rise in PBL height between 1601 and 1708

MYJ (solid) and TEMF (circles) PBLs on MYJ/Noah cycle2 soil

Both runs capture PBL evolution reasonably well, BUT
MYJ is plotted with 0.2K added and height multiplied by 1.2
TEMF height multiplied by 1.1

So TEMF is doing a little better (less correction needed)

Model stabilizes sooner than reality



Preliminary conclusions and further work

Spinup increases spatial variation of soil variables (downscaling)

- Initial adjustment is quick (a day or two)

- Adjustment continues over months

Spinup removes the moist bias of ERA-Interim

No evidence for reduction of scaling differences due to LSM formulation

- Two LSMs show rather different behavior even after long spinup

Over-drying can compensate for too little entrainment in PBL scheme

- Not clear how to do this prospectively (for forecasting)

- No evidence of general compensation for errors in parameters or formulation

Major flaw: Results depend on quality of modeled precip, which is unreliable

Data needed for “completion”:

- Representative fluxes and soil parameters for field site grid box

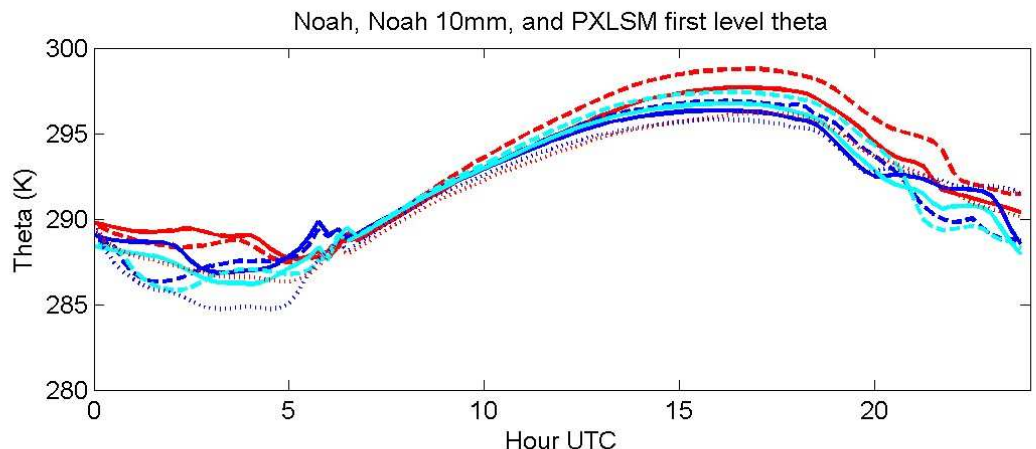
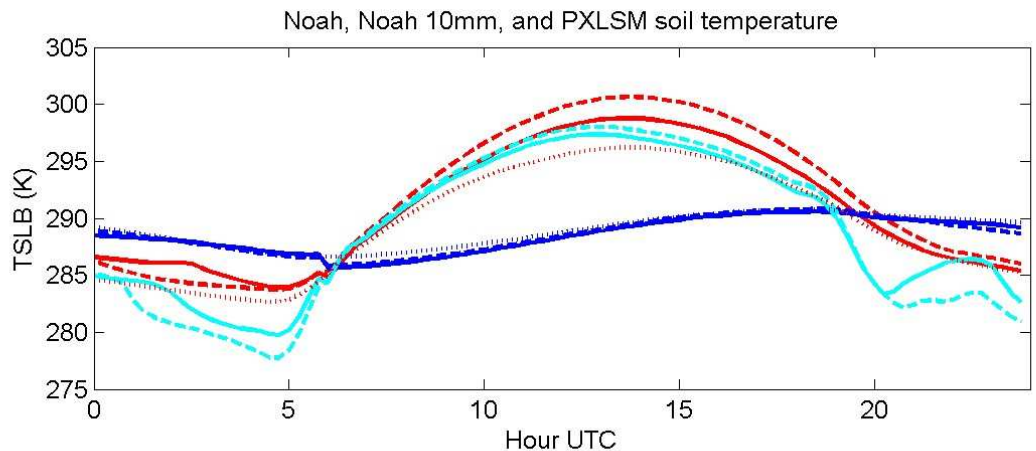
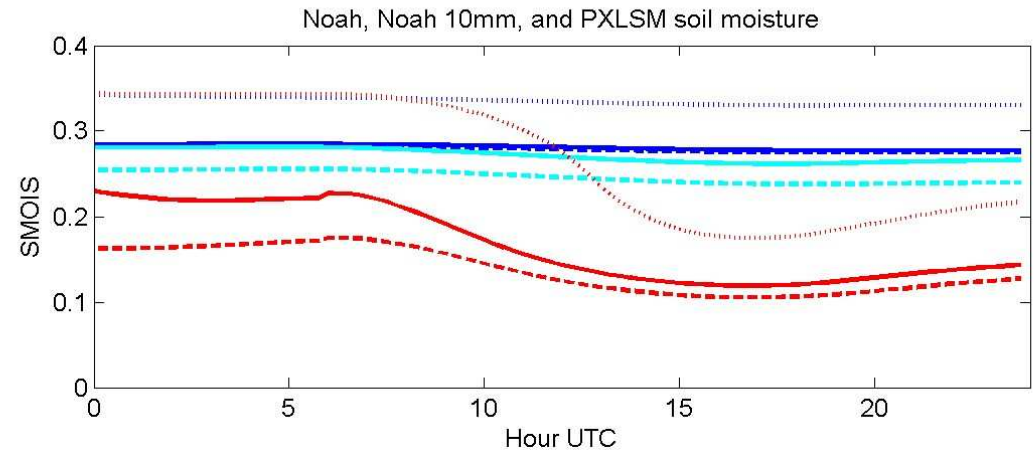
Diurnal patterns: Soil moisture and temp, 1st level temperature (site 1 only)

Top soil level

PX moisture more variable

Noah moisture and temperature vary little (diurnally or cycle-to-cycle) with default 10cm 1st layer, more with 10mm layer

- Blue solid = Noah default, 1st cycle
- Blue dashed = Noah default, 2nd cycle
- Blue dotted = Noah default, ERA
- Red solid = PX, 1st cycle
- Red dashed = PX, 2nd cycle
- Red dotted = PX, ERA
- Cyan solid = Noah 10mm, 1st cycle
- Cyan dashed = Noah 10mm, 2nd cycle

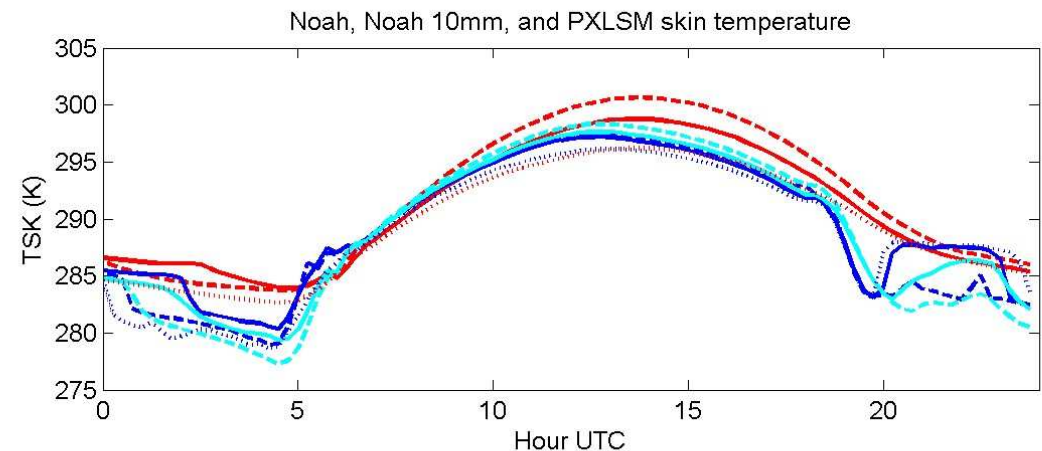
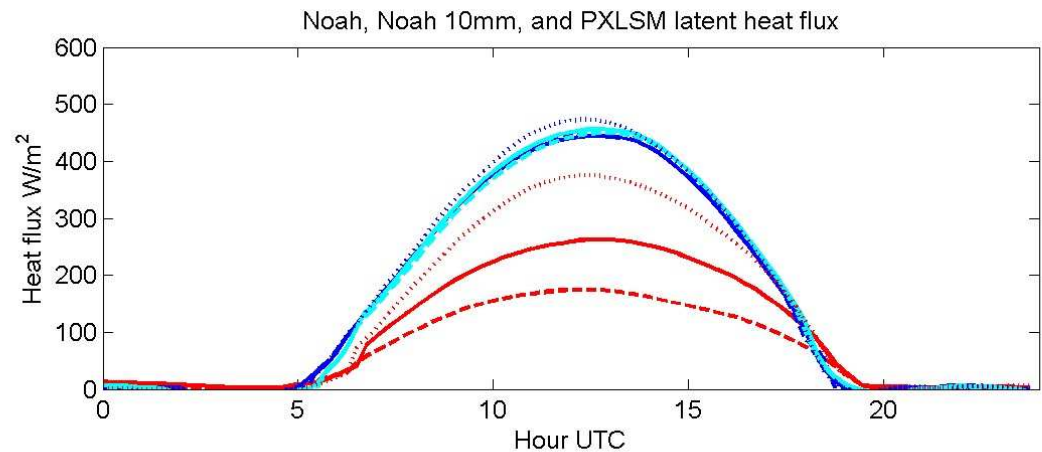
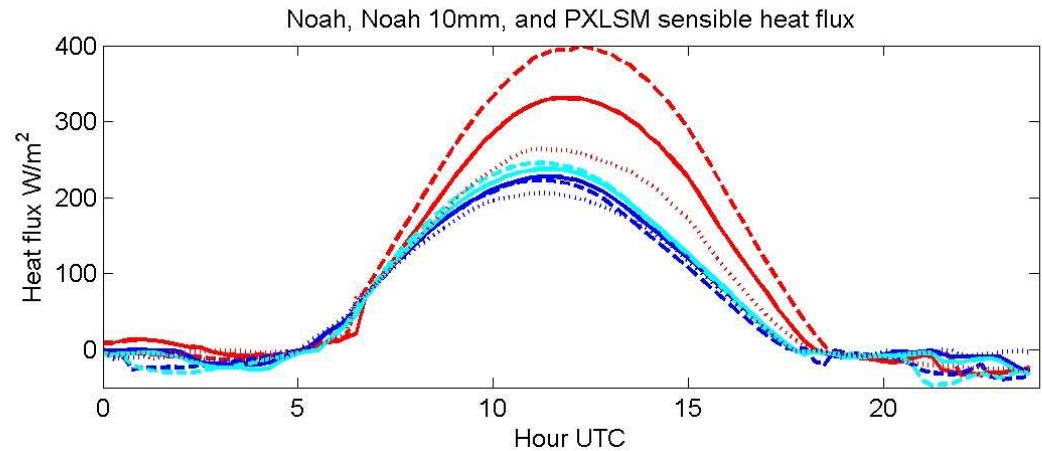


Diurnal patterns: Heat fluxes and skin temperature (site 1 only)

Heat flux partitioning goes as
expected from soil moisture

Cycling Noah has little effect at this
site

Blue solid = Noah default, 1st cycle
Blue dashed = Noah default, 2nd cycle
Blue dotted = Noah default, ERA
Red solid = PX, 1st cycle
Red dashed = PX, 2nd cycle
Red dotted = PX, ERA
Cyan solid = Noah 10mm, 1st cycle
Cyan dashed = Noah 10mm, 2nd cycle

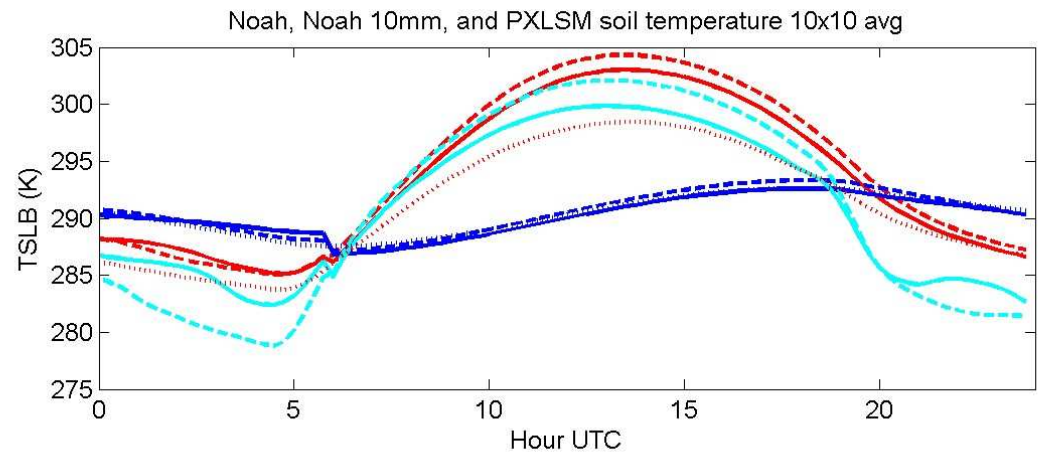
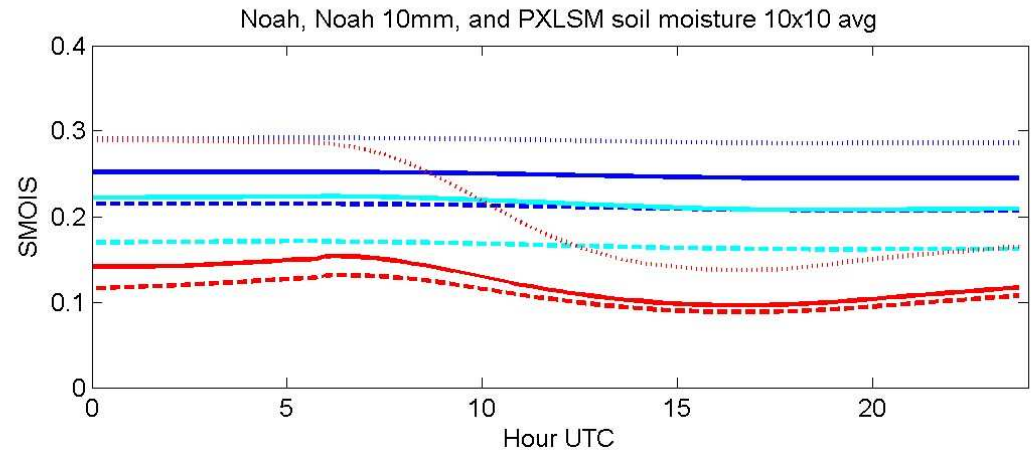


Diurnal patterns: Soil moisture and temp, 1st level temperature (10x10 avg NE of site)

PX moisture more variable

Noah moisture and temperature vary
little diurnally with default 10cm 1st
layer, more with 10mm layer

Blue solid = Noah default, 1st cycle
Blue dashed = Noah default, 2nd cycle
Blue dotted = Noah default, ERA
Red solid = PX, 1st cycle
Red dashed = PX, 2nd cycle
Red dotted = PX, ERA
Cyan solid = Noah 10mm, 1st cycle
Cyan dashed = Noah 10mm, 2nd cycle



Diurnal patterns: Heat fluxes and skin temperature (10x10 avg NE of site)

Heat flux partitioning goes as
expected from soil moisture

Cycling Noah has more effect on the
average than at site 1 only

Blue solid = Noah default, 1st cycle
Blue dashed = Noah default, 2nd cycle
Blue dotted = Noah default, ERA
Red solid = PX, 1st cycle
Red dashed = PX, 2nd cycle
Red dotted = PX, ERA
Cyan solid = Noah 10mm, 1st cycle
Cyan dashed = Noah 10mm, 2nd cycle

