
The Geophysical Institute (GFI) at the University of Bergen

Prof. Joachim Reuder

Joachim Reuder, Geophysical Institute, University of Bergen

joachim.reuder@gfi.uib.no

Geophysical Institute, University of Bergen

founded in 1917 (own building in 1928)

important basis for foundation of UiB in 1946

Bergen School of Meteorology (i. a. Bjercknes, Rossby)



Geophysical Institute, University of Bergen

part of the faculty of Mathematics and Natural Sciences

dedicated to research and education in meteorology, climatology, and oceanography

total staff: ca. 60

administration/technical: 10

permanent scientific positions: 20 (8 in meteorology/climatology)

8 professor II positions

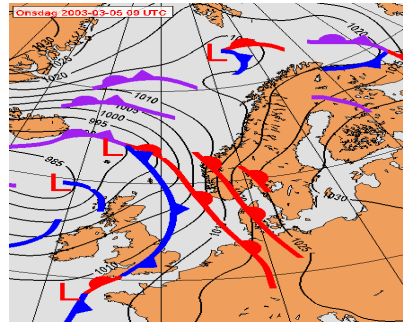
fixed-term scientific positions: ca. 30 (12 in meteorology/climatology)

40 Phd students, ca. 30 master students, ca. 80 bachelor students

more information on the web: <http://www.uib.no/gfi/en>

Geophysical Institute – research areas

Climate modelling and analysis



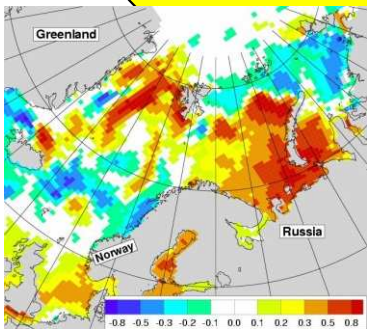
Meteorology

Polar research

Operational oceanography

Air-ice-ocean interaction

Marine physics-biology



Dynamical and large scale oceanography

Coastal and small scale oceanography

Chemical oceanography

